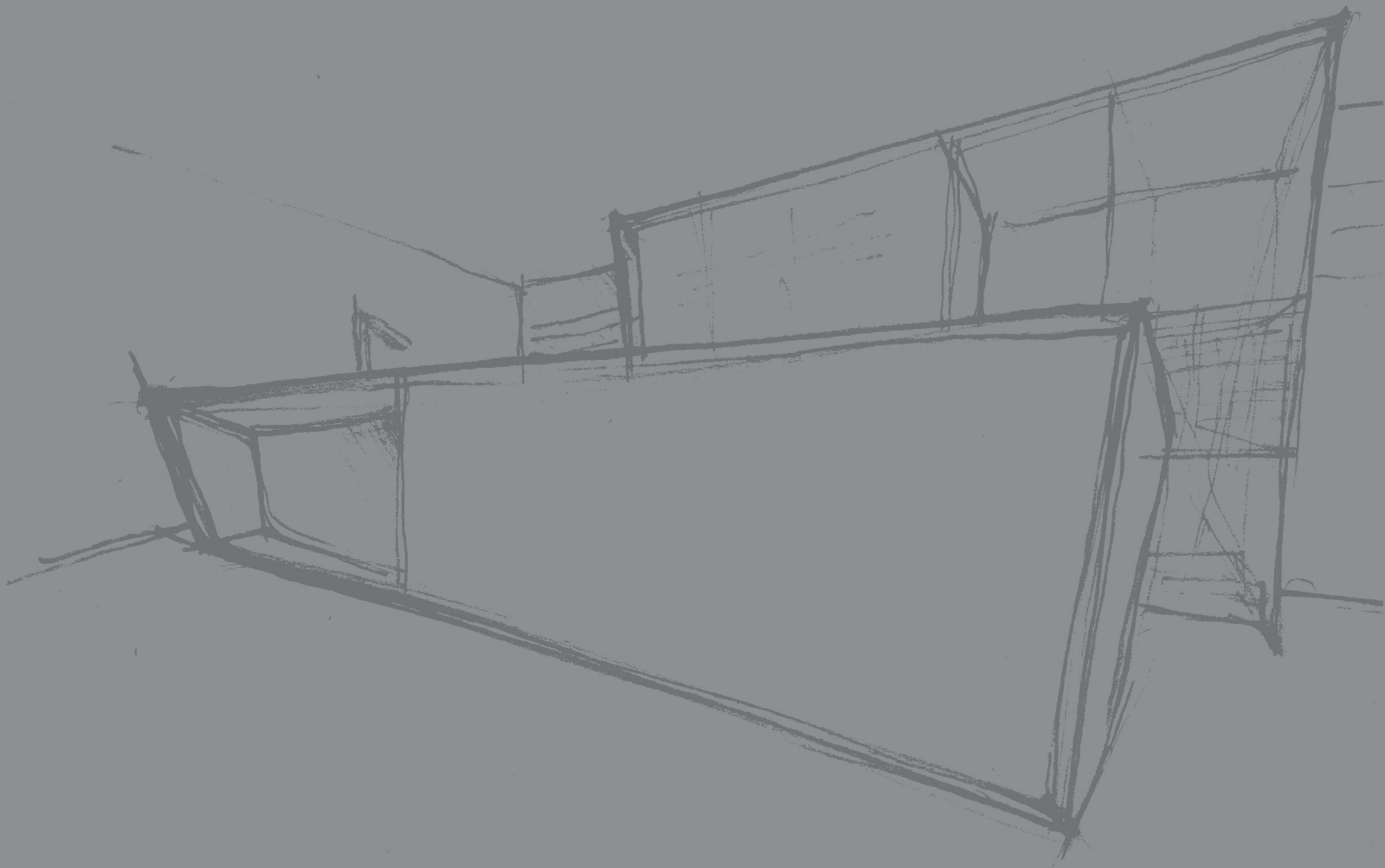


TIARA 2015



Because nothing is
quite so luxurious as
an individual eye...



Begin with the end in mind.

Where you want to be, how it will look, what you want to feel. It may be the most coveted mantra in the corporate world today, but at Tiara, this envisioning has been a way of life for nearly a decade now.

For us design is interlinked with human behaviour: we don't just design kitchens, we design spaces that enhance lives, for the better. Spaces that allow you to flourish instead of fumble, that are as functional as they are stunning. Where the journey - from beginning to end - is an exhilarating part of the experience, rather than being a mere necessity.

But that is not where our path culminates. Beyond the highly-rated designs and innovative custom solutions, our journey continues. Because in the end, what matters to us the most, is the reason our clients - architects, interior designers and kitchen owners - continue to choose us over the world: how we make them feel.



Whenever something is engineered as complex, it is designed to keep you simple.

The ancient Roman architect, Vitruvius insisted that three fundamental principles are essential to design: function, structure and beauty. Although he wrote this in circa 19 B.C., his formula is still the benchmark when it comes to modern design.

As one of India's oldest and best known kitchen experts, we are great believers in the power of good design. But design without function serves no purpose. For us that means ergonomically designed kitchens that guarantee incomparable ease of use. Design must create beauty from structural necessity - this is what separates TIARA from kitchens that come out of a box. Whether you're looking at our seamless fronts or the innermost fittings of our cabinets, you'll find a precision and perfection that's the hallmark of our products. And finally, without visual or sensory appeal, design cannot rise to be beautiful. Beauty is the ultimate test of good design. That's why we believe in creating objects of sublime beauty.



T1 is both a masterpiece of meticulous craftsmanship and a stunning example of contemporary design. When not in use, it works like a visual exclamation mark, stirring up the landscape of your home. Slide in the doors, press a button, and you have a supremely functional muse for culinary creativity. It's the kind of kitchen that will be filled with adulation as much as it will be filled with people.

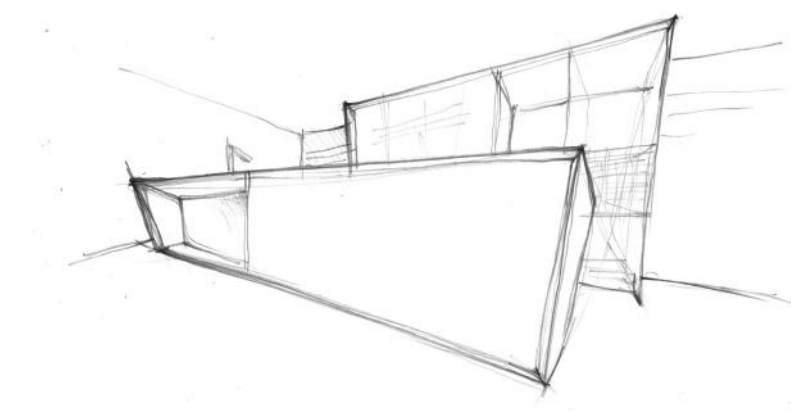


Why fit in when you were meant to stand out?

Pure lines and vertical elements: this is what the future of the kitchen looks like. Well-appointed and classically elegant, T1's stark, pared-down simplicity belies its incredible functionality. Clean, uninterrupted lines that seemingly disappear into themselves create a free-standing space that commands the eye.



Masterpiece: A stunning amalgamation of glass, rough cut elm veneer and neolith stone. The 4 meter wide monoblock has a downdraft chimney, and two different glass surfaces for demarcation of function. The tall unit has retractable, patented TIARA glass doors and appliances that are the cutting edge in culinary technology. Light and equipped with anti-shock features, the doors maintain perfect flatness along with being 100% waterproof and non-deformable.

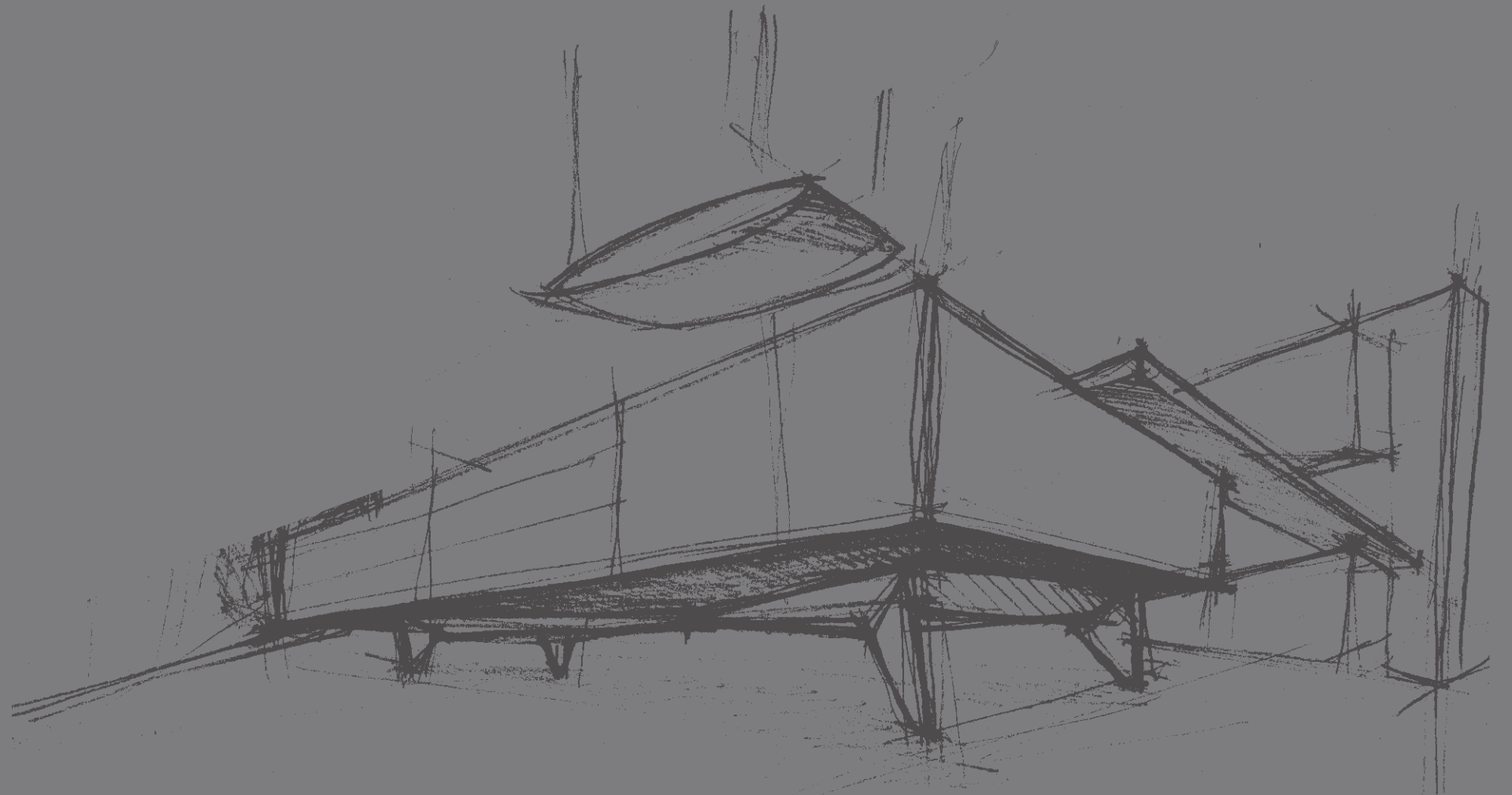




A great idea always puts people first.

TIARA's genius lies in the deft adaptation of international standards to Indian common-sense. As our peers and clients will attest, this dedication to user design is what sets us miles ahead of the competition.

Built from first-class materials, with talented craftsmanship and technical precision, and perfected with genuine customer understanding, our kitchens are stunning: they are also the easiest and most effortless to work in. We believe that while design must be breathtaking, its functionality has to be reassuringly familiar. All the work that goes in before you see a TIARA kitchen – from scientific research to hundreds of design sketches to our notoriously stringent quality standards – is about a simple and elemental truth: what you have in front of you may have been produced by a machine, but it is shaped by a human hand.





T2

Subtle and restrained in its design, T2 is the perfect example of a lavish cooking space that is generous in its sizing and yet intensely personal in its feel. The languid cool of its counters melts into the soft brown of its fronts, allowing for a soothing visual experience. It's the kind of kitchen that you can entertain in.





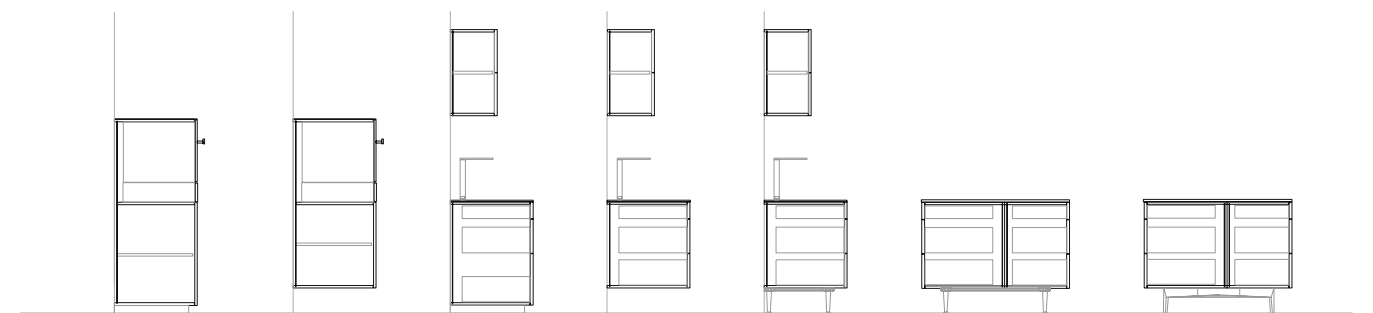
Sophisticated: A striking light panel sheds homogenous glow across the open-plan layout that remains connected through glass panelling and a breakfast counter while offering minutely planned space identity. The floating chimney offers a visual anchor to the symphony of steel, walnut and granite





Take centre stage.

With plenty of space for free development and strong shapes T2 gives the kitchen its own individual structure. Each element divides space and defines function in a seamless flow. With outstanding options for organisation, here there's a place for everything. Especially perfection.





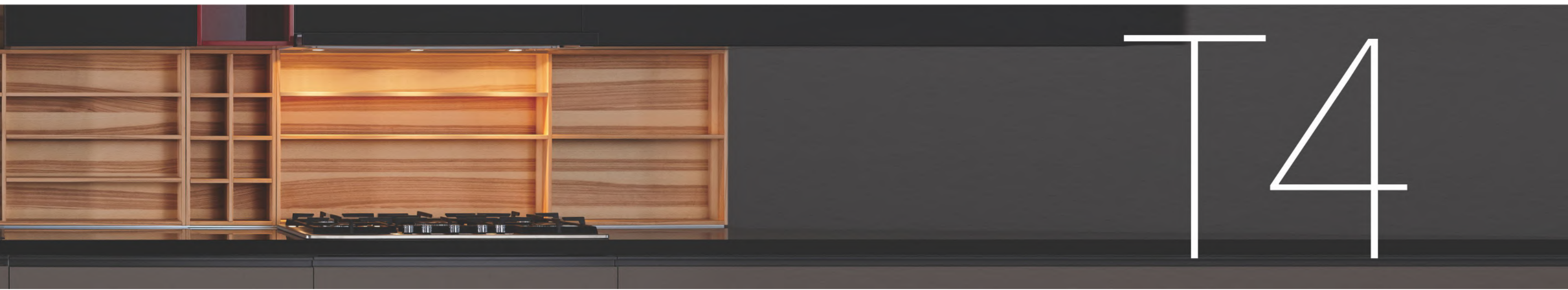
What happens when you go beyond the linear and expected forms of cabinets and platforms and cupboards? What happens when you go beyond the conventional kitchen as we know it? T3's strong, crisp, freestanding forms create a striking design structure that allows you to multitask with ease. It's the kind of kitchen you can see yourself make memories in.





At the heart of T3 is a large centre island made from reconstituted veneer and lacquer, with a prep sink and seating area. The floating, 60mm thick, corian counter top with bevelled edges cleverly echoes the design language of its puristic fronts, even as its different levels distinguish the working spaces. The all encompassing design – and plenty of space – means you need no other storage options.



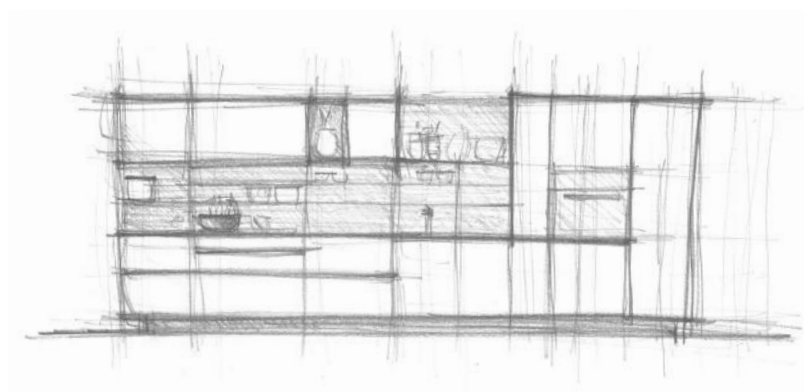


Great design is all about details: from its handle-free fronts to clean lines, T4 is the perfect example of immaculate construction techniques and modern aesthetics. Linear forms divide function in a seamless flow that is effortless and elegant as well as innovatively smart on storage. It's the kind of kitchen you can make a home around.





Sturdy: The linear plan offers base units, tall units, wall units and functional open boxes. Built from Fenix, the antiscratch material, it weathers and ages immaculately.





T5

What is simple is also sublime. Ergonomically designed for maximum ease of use and quick access, T5 offers the subtlety of contemporary aesthetics with the familiarity of the traditional kitchen layout. With plenty of storage and high-performance functionality, it's the kind of kitchen you can use with effortless charm.



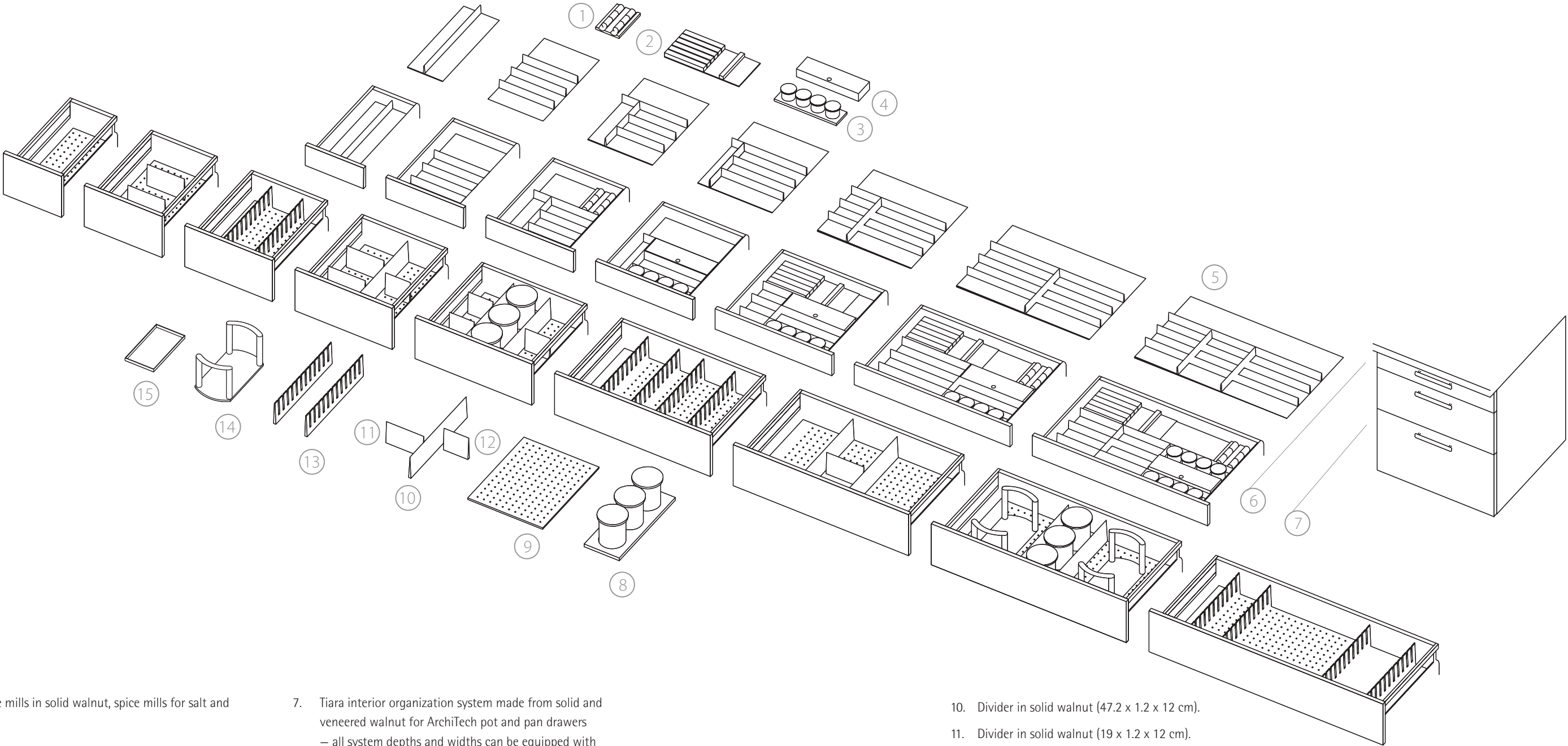
Perfection: Outside and Inside

We like to make the effort in our design, so you don't need to take the effort in using it. The Arci-Tech from Hettich drawer systems deliver effective use of storage space and unparalleled convenience: from feather light glides to high-performance fittings. We don't believe in waste of space: be it small niches, narrow cabinets or seemingly inaccessible corners, we make efficient use of space for clear view and easy access. Our flexible organiser systems, based on the modular principle, are adapted to your individual requirements.

Internal dividers of various sizes in walnut fit perfectly on beautiful, non-slip linings. Ergonomically shaped options for cutlery and kitchen tools offer a sensible and beautiful organisation system that guarantees order and clarity. Along with the advantage of technology, you get the comfort of guaranteed durability and TIARA's impeccable customer service. It's the kind of kitchen you can call an intuitive kitchen.



Interior Organization An Overview



- 1. Insert spice mills in solid walnut, spice mills for salt and pepper.
- 2. Knife block.
- 3. Insert in solid walnut, spice containers in stainless steel for salt, pepper, raw, fine.
- 4. Foil dispenser in stainless steel.
- 5. Cutlery inserts made from solid and veneered walnut in various widths - (W x D x H 30/40/45/50/60/80/90 x 47.2 x 4.9 cm).
- 6. Possible fitting variations for ArchiTech normal drawers.

- 7. Tiara interior organization system made from solid and veneered walnut for ArchiTech pot and pan drawers — all system depths and widths can be equipped with different sized compartments and inserts for spice jars, plate racks and plate holders, various dividers.(W x D x H 30/40/45/50/60/80/90/100/120 x 47.2 x 17 cm).
- 8. Spice holder in solid walnut, spice containers in stainless steel with glass lid.
- 9. Peg board in veneered walnut.

- 10. Divider in solid walnut (47.2 x 1.2 x 12 cm).
- 11. Divider in solid walnut (19 x 1.2 x 12 cm).
- 12. Divider in solid walnut (12.6 x 1.2 x 12 cm).
- 13. Plate rack in solid walnut.
- 14. Plate holder with stainless steel handle.
- 15. Oil pan in stainless steel.

The technology that powers the world, now in your kitchen.

Pulling out a drawer. Closing the shutters. Accessing your swivelling storage. Opening a soft-lit door. With Tiara, every action is an experience of comfort and convenience. The German hardware and accessories we use (Hettich) ensure that using your kitchen translates into luxurious yet practical functionality. Whether you are looking for silent auto closing systems, moving corners, roller shutters or turn-motion corners, you will find the latest innovations in kitchen systems at Tiara. From height adjustable fittings, to cabinets with intelligent lighting; from pedestal dustbins to pull-out tall drawers, every detail of a Tiara kitchen is designed for optimal use and unequalled functionality.

We offer a wide range of built-in and free standing appliances by international brands Miele, Siemens, Sub Zero and Wolf. Be it indulgent luxury (warmer drawers to keep meals warm while guests get to the table and wine chillers for that perfect bubbly) or ubiquitous necessity (microwaves, ovens, refrigerators, dish washers and steam ovens): we have appliances to suit every need and budget.



TIARA

Tiara Furniture Systems

Plot 812, at Rakanpur,
PO - Santej, Kalol,
Gandhinagar - 382721. Gujarat. India.
Telfax: +91 2764 286378,
Email: info@tiarafurniture.co.in
www.tiarafurniture.co.in

Showroom

Tiara Kitchen Kulture
"B" Wing, FF 2-3, Shapath 4,
Opp. Karnavati club, S.G.Highway,
Ahmedabad-380 051. Gujarat, India.
T: + 91 79-40092329
Email: kitchenkulture@tiarafurniture.co.in